

SOYBEAN BRAND PRODUCT INFORMATION

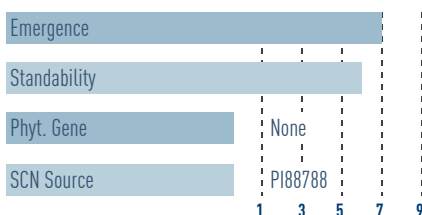


4525 E™

4.4-4.5 Maturity Range
E3,SCN-SB Trait



KEY CHARACTERISTICS

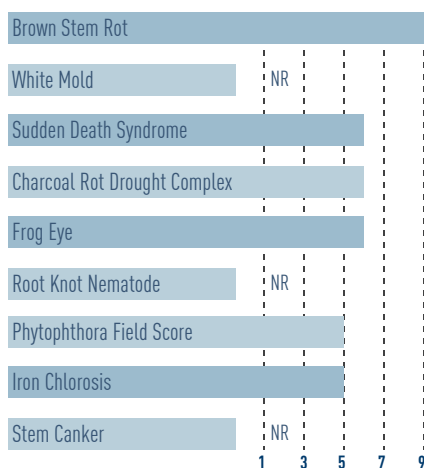


- Enlited™ Grade mid group 4 combines high yield and versatility
- Very good yield stability for both low and high yield environments
- Good performance on high pH soils
- Canopy and plant height allow use on marginal soils

PLANT CHARACTERISTICS

Plant Height	Plant Type	Pubescence Color	Flower Color	Pod Color	Hilum Color	% Protein	% Oil
5	6	Light Tawny	Purple	Brown	Black	NA	NA

DISEASE TOLERANCE



MANAGEMENT CHARACTERISTICS

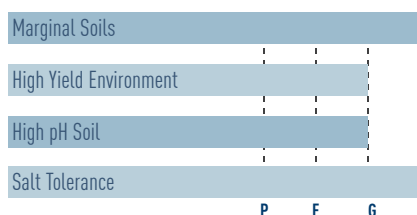


Chart Ratings

All ratings on a 1-9 scale with 9 being the highest | Plant Type: 9 = Extremely Bushy, 1 = Very Narrow | Height Ratings: 4-5 = Medium Height for Maturity, 6-7 = Medium - Tall Height for Maturity, 8-9 = Tall Height for Maturity

1 = Poor, 9 = Excellent | E = Excellent, G = Good, F = Fair, P = Poor | NR = No Rating



** All products denoted with ™ are brand names.

Product performance in water-limited environments is variable and depends on many factors such as the severity and timing of moisture deficiency, heat stress, soil type, management practices and environmental stress as well as disease and pest pressures. All products may exhibit reduced yield under water and heat stress. Individual results may vary.

IMPORTANT: Trait rating scores provide key information useful in selection and management of Hoegemeyer brand products in your area. Information and ratings are based on comparisons with other Hoegemeyer brand products, not competitive products. Information and scores are assigned by Hoegemeyer Product Leads. Scores are based on period-of-years testing through 2024 harvest and were the latest available at time of printing. Some scores may change after 2025 harvest. Scores represent an average of performance data across areas of adaptation, multiple growing conditions, and a wide range of both climate and soil types and may not predict future results. All products within a hybrid family receive the same score unless observations indicate a significant difference. Individual product responses are variable and subject to a variety of environmental, disease and pest pressures. Please use this information as only one component of your product positioning decision. Refer to www.therightseed.com or contact a Hoegemeyer sales professional for the latest and most complete listing of traits and scores for each Hoegemeyer brand product and for product placement and management suggestions specific to your operation and local conditions.

TECHNOLOGY SEGMENT: Always follow stewardship practices in accordance with the Product Use Guide (PUG) or other product-specific stewardship requirements including grain marketing and pesticide label directions. **Varieties with Enlist E3® technology (E3):** The transgenic soybean event in Enlist E3® soybeans is jointly developed and owned by Corteva Agriscience and M.S. Technologies L.L.C. **Varieties with BOLT® technology** provide excellent plant-back flexibility for soybeans following application of sulfonylurea (SU) herbicides such as LeadOff® or Basis® Blend as a component of a burndown program or for double-crop soybeans following SU herbicides such as Finesse® applied to wheat the previous fall. **Varieties with the STS® trait** are tolerant to certain sulfonylurea (SU) herbicides. This technology allows post-emergent applications of Synchrony® XP and Classic® herbicides without crop injury or stress (see herbicide product labels). NOTE: A soybean variety with an herbicide tolerant trait does not confer tolerance to all herbicides. Spraying herbicides not labeled for a specific soybean variety will result in severe plant injury or plant death. Always read and follow herbicide label directions and precautions for use. **MARKET SEGMENT:** Designations indicate product is also suitable for the following market. **Enlimited™** Grade Soybeans by Hoegemeyer is a trademark of Corteva Agriscience.

Following burndown, Enlist Duo® and Enlist One® herbicides with Colex-D® technology are the only herbicides containing 2,4-D that are authorized for preemergence and postemergence use with Enlist® crops. Consult Enlist® herbicide labels for weed species controlled. Enlist Duo and Enlist One herbicides are not registered for use or sale in all states and counties; are not registered in AK, CA, CT, HI, ID, MA, ME, MT, NH, NV, OR, RI, UT, VT, WA and WY; and have additional subcounty restrictions in AL, GA, TN and TX, while existing county restrictions still remain in FL. All users must check "Bulletins Live! Two" no earlier than six months before using Enlist One or Enlist Duo. To obtain "Bulletins," consult epa.gov/espp/, call 1-844-447-3813, or email ESPP@epa.gov. You must use the "Bulletin" valid for the month and state and county in which Enlist One or Enlist Duo are being applied. Contact your state pesticide regulatory agency if you have questions about the registration status of Enlist® herbicides in your area. ALWAYS READ AND FOLLOW PESTICIDE LABEL DIRECTIONS. IT IS A VIOLATION OF FEDERAL AND STATE LAW TO USE ANY PESTICIDE PRODUCT OTHER THAN IN ACCORDANCE WITH ITS LABELING. ONLY USE FORMULATIONS THAT ARE SPECIFICALLY LABELED FOR SUCH USE IN THE STATE OF APPLICATION. USE OF PESTICIDE PRODUCTS, INCLUDING, WITHOUT LIMITATION, 2,4-D-CONTAINING PRODUCTS NOT AUTHORIZED FOR USE WITH ENLIST CROPS, MAY RESULT IN OFF-TARGET DAMAGE TO SENSITIVE CROPS/AREAS AND/OR SUSCEPTIBLE PLANTS, IN ADDITION TO CIVIL AND/OR CRIMINAL PENALTIES. Additional product-specific stewardship requirements for Enlist crops, including the Enlist Product Use Guide, can be found at www.traitstewardship.com.

Components of LumiGEN® technologies for soybeans are applied at a production facility, or by an independent sales representative of Corteva Agriscience or its affiliates. Not all sales representatives offer treatment services, and costs and other charges may vary. See your sales representative for details. Seed applied technologies exclusive to Corteva Agriscience and its affiliates.

ILEVO® is a registered trademark of BASF.

Hoegemeyer brand products are provided subject to the terms and conditions of purchase which are part of the labeling and purchase documents.

TM ® Trademarks of Corteva Agriscience and its affiliated companies.

© 2025 Corteva.



STS®
herbicide tolerant trait



ILEVO®
Seed Treatment